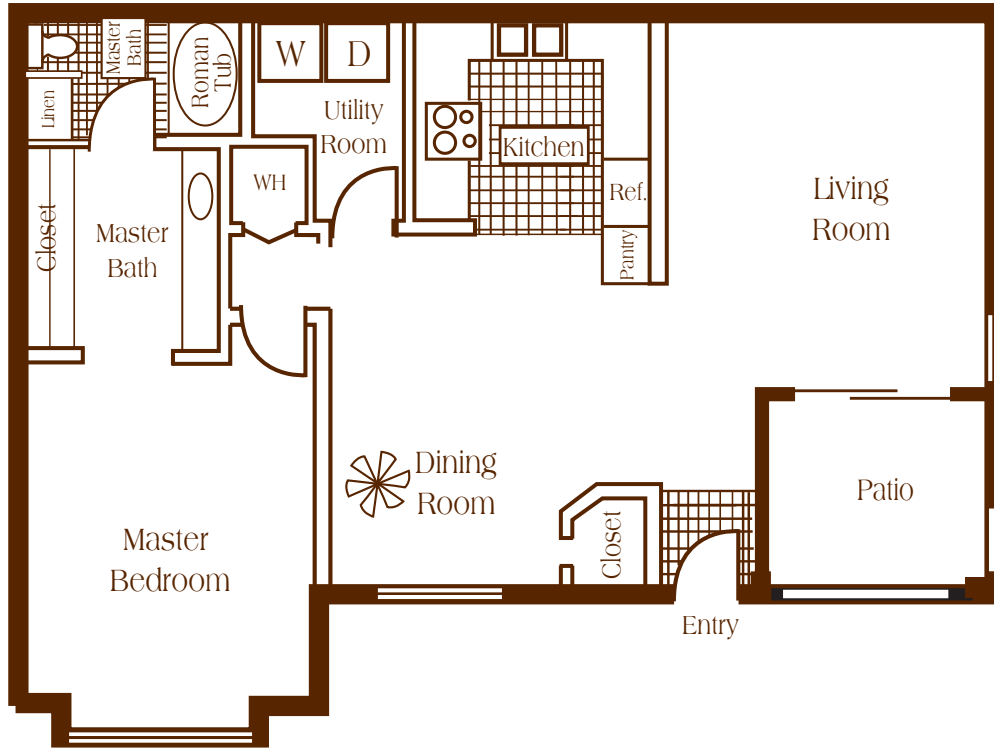


Sanctuary Cove

1 Bedroom 1 Bath

927 Square Feet

Starting at \$999



INTERIOR FEATURES

- **INTRACOASTAL AND LAKEFRONT VIEWS AVAILABLE**
- **INDIVIDUAL ENTRANCES**
- **FULLY APPOINTED KITCHEN**
- **FULL SIZE WASHER AND DRYER**
- **DECORATIVE CERAMIC TILE ENTRY, KITCHEN AND BATH**
- **CEILING FAN IN DINING AREA**
- **MARBLE ROMAN TUB**
- **TRAY CEILINGS IN SELECT APARTMENT**
- **SCREENED PATIO OR BALCONY**

INTRACOASTAL FEATURES

- **PRIVATE WHITE SAND BEACH**
- **WATERFRONT POOL AND BAR**
- **BBQ AREA**
- **SPECTACULAR VIEWS AVAILABLE**

MON, WED & FRI: 8AM-6PM

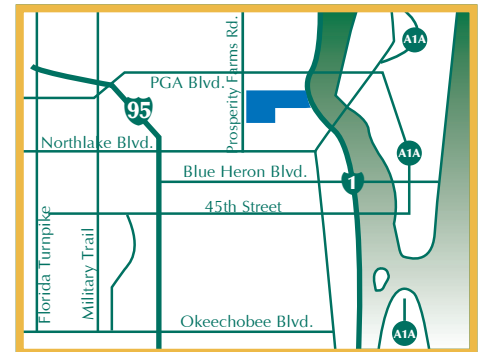
TUES & THURS: 8AM-8PM

SAT & SUN: 9AM-6PM

RECREATIONAL FEATURES

- **TROPICAL POOLS AND SPA**
- **24 HOUR FITNESS CENTER AND AEROBIC STUDIO**
- **LIGHTED TENNIS COURT**
- **COMMUNITY PARK NEXT DOOR FEATURING BASKETBALL, PLAYGROUND AND BASEBALL FIELD**

PRICES SUBJECT TO CHANGE WITHOUT NOTICE



SANCTUARY COVE

700 SANCTUARY COVE DRIVE

NORTH PALM BEACH, FLORIDA 33410

PHONE: 561.775.8680

FAX: 561.691.5836

WWW.SANCTUARYCOVEAPARTMENTS.COM